

Woltman cold/hot water meters



www.fedrelflowmeters.com
www.flow-meters.co.in



FM-02
FM-03

Fedrel Meter is a part of:
V.K. GROUP



ISI MARKED & IBR CERTIFIED

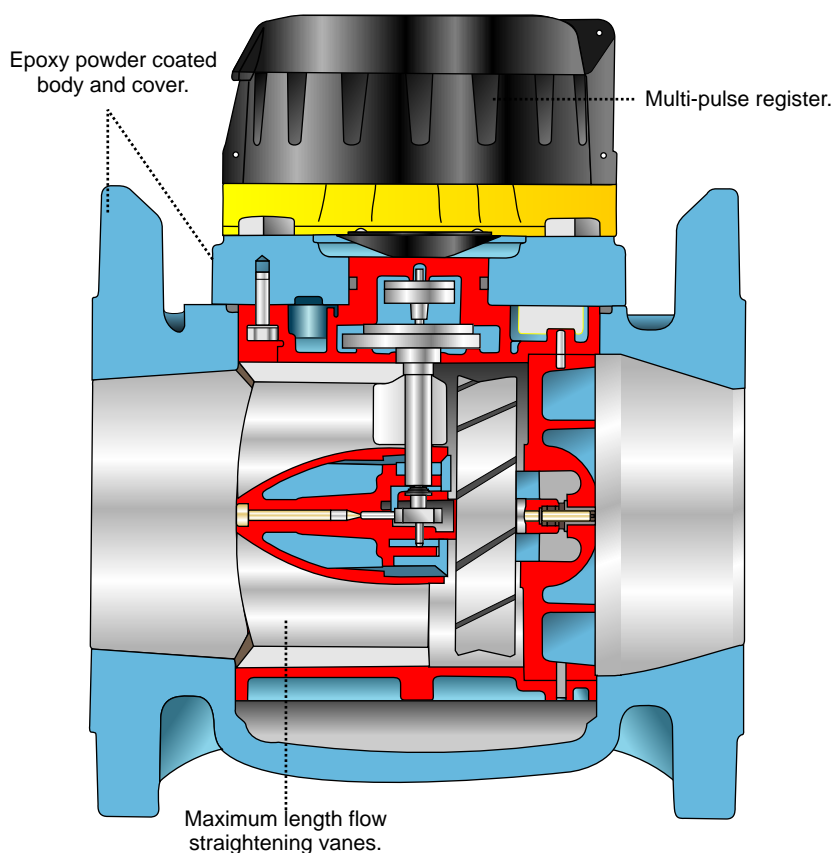
PIONEERING FLUID CONTROL



Fedrel Meter is a Legal Trade Mark of V.A. Valves

Woltman cold / hot water meters

The FM-02 / FM-03 is a Woltman-type meter designed for measuring bulk flows of cold / hot potable water in commercial or industrial applications and distribution system monitoring.



The meter complies with all relevant international quality standards, ISO4064 Class B specifications for forward flow installations in horizontal, vertical and inclined pipelines.

Robust construction

Like all Fedrel meters, the FM-02 / FM-03 is manufactured from the resistance to wear and corrosion. Meter body and cover are powder coated for protection in all environments.

In-line strainer

The use of an Fedrel in-line strainer is recommended to protect the rotor and

Special Features:

- Dry-dial, Magnetic Transmission.
- Vacuum sealed register.
- Measuring accuracy conforms to ISO 4064 class B.
- Low Driving Resistance.
- Removable Element Mechanism for easy online repair and Maintenance.

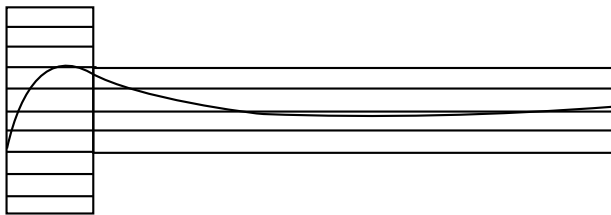
FM-02 / FM-03 50mm-500mm Main Technical Data

Meter Size (m.m.)	Class	Overload Flow Q_s	Normal Flow Q_p	Transitional Flow Q_t	Min Flow Q_{min}	Min Reading	Max Reading
		M^3/h		Lit/hr.			
50	A	30	15	4.5	1.2	0.01	999999
	B			3.0	0.45		
65	A	50	25	7.5	2	0.01	999999
	B			5.0	0.75		
80	A	80	40	12	3.2	0.01	999999
	B			8.0	1.2		
100	A	120	60	18	4.8	0.01	999999
	B			12	1.8		
125	A	200	100	30	8	0.01	999999
	B			20	3		
150	A	300	150	45	12	0.1	9999999
	B			30	4.5		
200	A	500	250	75	20	0.1	9999999
	B			50	7.5		
250	A	800	400	120	32	0.1	9999999
	B			80	12		
300	A	1200	600	180	48	1	9999999
	B			120	18		
400	A	2000	1000	300	80	1	9999999
	B			200	30		
500	A	3000	1500	450	120	1	99999999
	B			300	45		

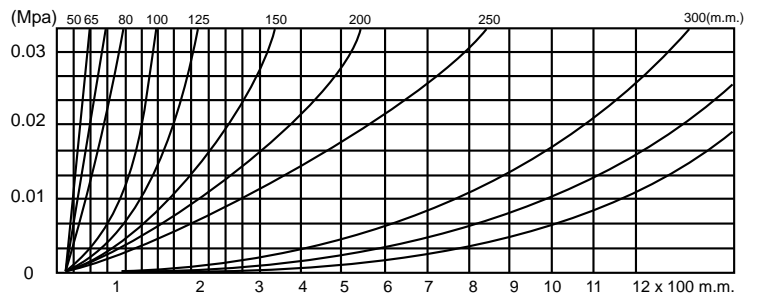
Indicating Error

At low zone is $\pm 5\%$ from minimum flow rate (q_{min}) to transitional (q_t) exclusive flow rate (q) to overload flow rate (q_s).

Flow-Error Curve

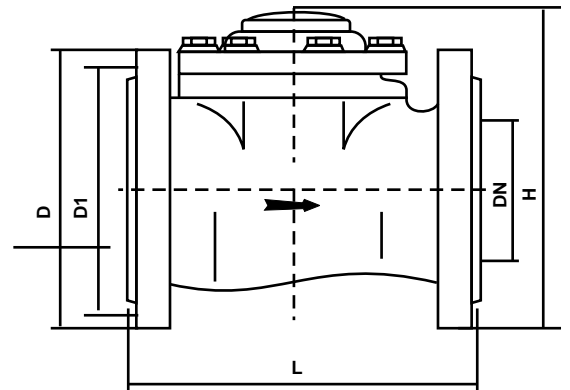


Head Loss Curve



Dimension and Weight

Meter Size (m.m.)	Length L	Width B	Height H				Weight kg
	M.M.			D M.M.	D1 both Crcl. dia M.M.	Connecting Both dia Pcs.	
50	200	175	250	165	125	4 - M - 16	12
65	200	185	255	185	145	4 - M - 16	13
80	225	200	265	200	160	8 - M - 16	15
100	250	220	275	200	180	8 - M - 16	19
125	250	245	285	245	210	8 - M - 16	22
150	300	285	310	285	240	8 - M - 20	28
200	350	345	370	340	295	8 - M - 20	42
250	400	395	420	395	350	12 - M - 20	80
300	450	490	660	445	400	12 - M - 20	115
400	600	590	635	565	515	16 - M - 24	187
500	800	690	740	670	620	20 - M - 24	256



Working Condition

Water temperature $< 50^\circ C$ for Cold

Water temperature $< 90^\circ C$ for Hot

Working pressure 1.0Mpa

*The Dimension, Weight & Internal Design subject to the changes Made from Time to Time.

our associates



www.fedreflowmeters.com
www.flow-meters.co.in

V.A. VALVES

ISO 9001-2008 Certified

Udyog Nagar, Gadaipur, Jalandhar-144 004, India

Tel : +91-181-2601540/41, 2600276/376 , Fax: +91-181-2601741

E-mail: marketing@vk-utam.com, ankur.jain@vk-utam.com

Authorised Distributor for Rajasthan:

